



TK International
020 7794 8700
www.t-k.co.uk

Residential Sales
Residential Lettings
Property Management

Sales Office:
9 Heath Street
Hampstead
London NW3 6TP
E: sales@t-k.co.uk

Lettings Office:
16-18 Heath Street
Hampstead
London NW3 6TE
E: lettings@t-k.co.uk

tk.international
TK International
TK International

Est.
1998



South Hill Park Gardens London NW3

This beautiful family home has been renovated throughout to the highest standard with high quality finishes, well designed Lutron lighting, built in Sonos system and ample storage.

The property benefits from hardwood flooring throughout, a stunning formal reception with gas fire with integrated lighting, TV and sound system. This leads directly on to a terrace which in turn leads onto a garden with an outside gas fire place and dining area that is perfect for entertaining.

The kitchen, dining area and second reception are all linked and create a very practical family space downstairs. The first floor comprises on two good sized double bedrooms and a family bathroom. The second floor contains the master suite with walk through wardrobe and en suite with separate bath and shower.

The top floor has two further double bedrooms and ample eaves storage.

This truly stunning home is ideally located in South Hill Park which adjoins Hampstead Heath and is very close to South End Green and close to both Hampstead Village and Belsize Park.

EPC: C
Council Tax Band: H

£2,884 Per Week

SOLE AGENT











South Hill Park Gardens, London, NW3

Approximate Area = 2627 sq ft / 244 sq m

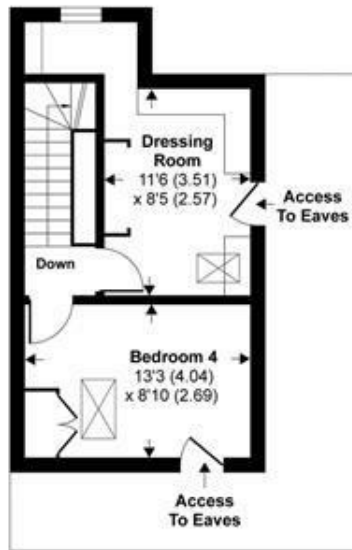
Limited Use Area(s) = 3 sq ft / 0.2 sq m

Total = 2630 sq ft / 244 sq m

For identification only - Not to scale



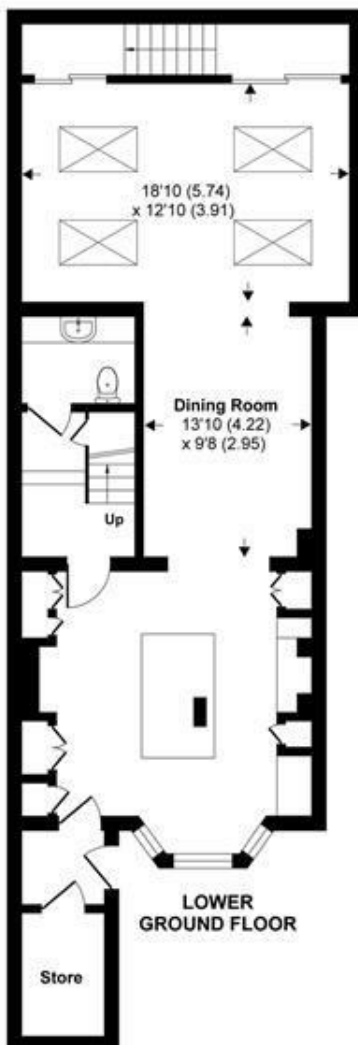
SECOND FLOOR



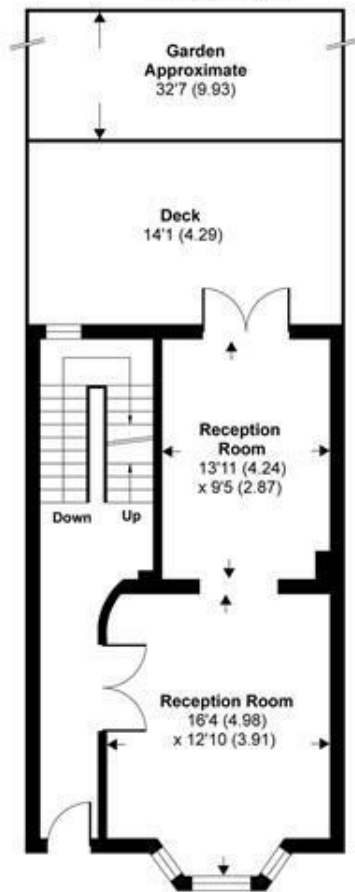
THIRD FLOOR



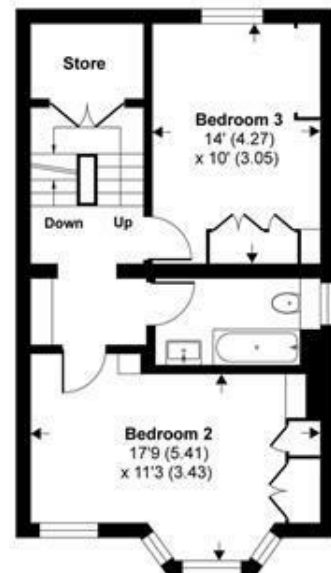
Denotes restricted head height



LOWER GROUND FLOOR



GROUND FLOOR



FIRST FLOOR



Certified
Property
Measurer

Floor plan produced in accordance with RICS Property Measurement Standards incorporating International Property Measurement Standards (IPMS2 Residential). © nidecom 2020. Produced for TK (Lettings) Ltd. REF: 648086